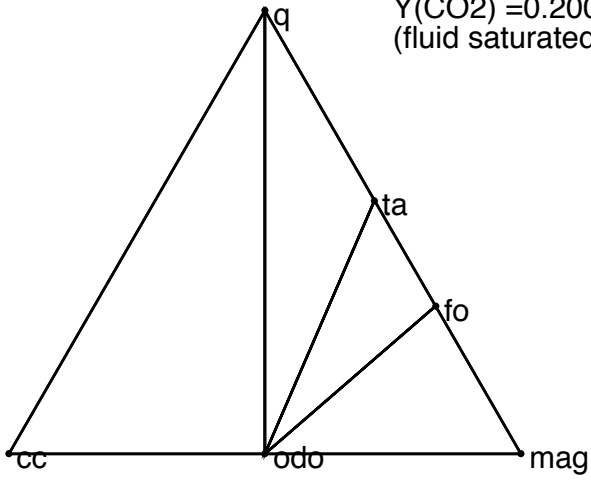
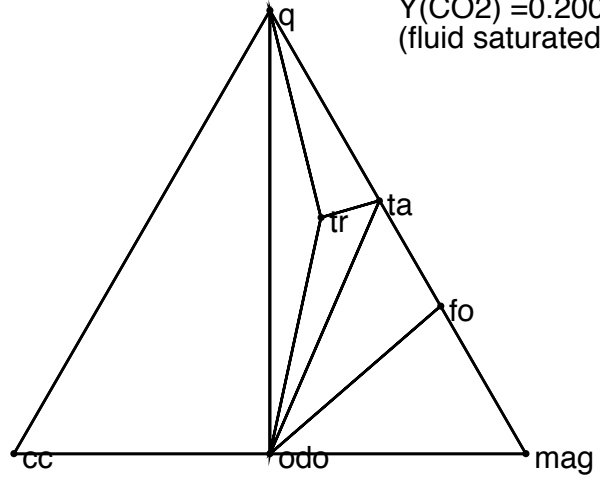


P(bar) =0.300E+04
T(K) = 830.
Y(CO2) =0.200
(fluid saturated)



P(bar) =0.300E+04
T(K) = 840.
Y(CO2) =0.200
(fluid saturated)



P(bar) =0.300E+04
T(K) = 865.
Y(CO2) =0.200
(fluid saturated)

